

FABRE MINERALS



**Open only from Tuesday,
February 1 until Friday,
February 11!**

DAVID BARTHELMY
3607 Aldergrove Dr.
Spring, TX
77388-5002 USA

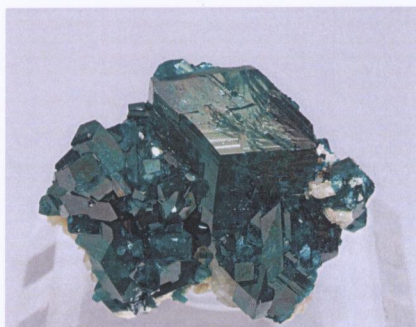
Barcelona 01/03/2011

As we did last year, in 2011 we will open room 164 of the InnSuites Hotel, Tucson City Center, later than the official start of the show. So we will open on Tuesday, February 1, instead of the January 29, and we will close on Friday, February 11 at 6:00 PM. Sorry for the inconvenience but we prefer to do a shorter but very busy show instead of a longer and slower one.

This time our main item will be the last release of specimens from the Jan Buma Fluorite collection. Jan Buma has over the years sold us several selections from his former Fluorite collection, but he always kept back a number of his best specimens as the basis of a new focused collection. This time, while he still has kept 20 specimens, mostly for their crystal forms, he sold the rest from his 30 years of carefully selecting piece by piece. So, taking into account this careful process of selection and the fact that we just bought it, we believe that Fluorite lovers will be very interested in what we will have to offer in Tucson this year!

Along with this we will also have a superb choice of specimens from the Desmond Sacco collection. Added to that will be a selection of many worldwide specimens, as well as fine specimens from the Folch and Pedro Goy collections. I hope this gives you an idea about what we will exhibit this year in Tucson.

See you there, or on line in our regular show chronicle published at: www.mineral-forum.com



Diopside - Tsumeb, NAMIBIA

3,7 x 3.2 cm.



Mimetite - Tsumeb, NAMIBIA

0,5 x 0.4 cm.



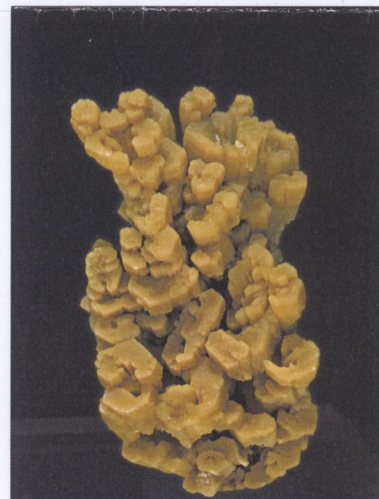
Vanadinite - Mibladen, MOROCCO

3.1 x 1.9 cm.



Ilvaite - CHINA

6.4 x 2 cm.



Pyromorphite - Córdoba, SPAIN

3.4 x 2.2 cm.

Jordi Fabre

